

OVE's Validation Methodology IDB Group's Evaluation Recommendation Tracking System (ReTS)

Copyright © [2021] Inter-American Development Bank. This work is licensed under a Creative Commons IGO 3.0 Attribution - NonCommercial - NoDerivatives (CC-IGO BY-NC-ND 3.0 IGO) license (<http://creativecommons.org/licenses/by-nc-nd/3.0/igo/legalcode>) and may be reproduced with attribution to the IDB and for any non-commercial purpose. No derivative work is allowed.

Any dispute related to the use of the works of the IDB that cannot be settled amicably shall be submitted to arbitration pursuant to the UNCITRAL rules. The use of the IDB's name for any purpose other than for attribution, and the use of IDB's logo shall be subject to a separate written license agreement between the IDB and the user and is not authorized as part of this CC-IGO license.

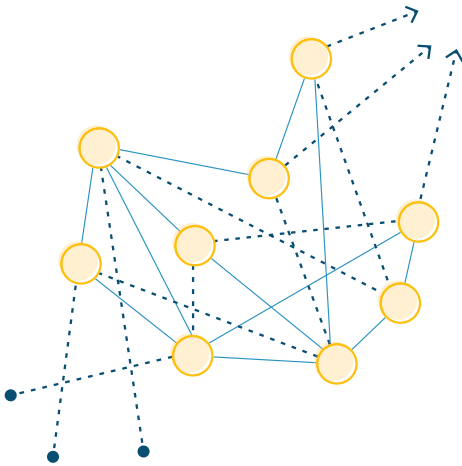
Note that link provided above includes additional terms and conditions of the license.

The opinions expressed in this publication are those of the authors and do not necessarily reflect the views of the Inter-American Development Bank, its Board of Directors, or the countries they represent.



© **Inter-American Development Bank, 2021**
Office of Evaluation and Oversight
1350 New York Avenue, N.W.
Washington, D.C. 20577
www.iadb.org/evaluation

OVE's Validation Methodology



The IDB Group's ReTS is a monitoring system aimed at providing the Boards of Executive Directors of the IDB and IDB Invest with periodic information for decision-making on Bank and IDB Invest actions and progress in implementing the endorsed recommendations issued by OVE. Assessing to what extent recommendations have been addressed is essential for institutional accountability and learning.

Stages of the validation cycle

1

Management prepares an action plan

After an evaluation is discussed at the Board(s), Management prepares an action plan to respond to those recommendations that are endorsed by the Executive Directors.

2

Action plans are recorded in the ReTS and validated by OVE for up to four years

OVE validates the action plans in terms of relevance, evaluability, implementation, and adoption. (Fig. 1)

3

OVE assesses the relevance and the evaluability of action plans as they are prepared by Management (first year)

In a first stage, OVE provides informal feedback to Management for each draft action plan. Relevance and evaluability are later formally assessed under the ReTS protocol (see criteria below). Both dimensions can be re-assessed in the following years only if the action plan had any changes in milestones or targets in comparison to the previous year. (Figs. 1, 2 and 3)

4

Implementation progress is annually updated by Management and monitored by OVE for up to four years (each year)

Management updates and reports to OVE on implementation of action plans. OVE assesses the degree of implementation of those actions with at least partial relevance, monitoring them for four years or until the date Management has set for completion of the corresponding action plan (see criteria below). (Figs. 1 and 3)

5

OVE determines the level of adoption (last year)

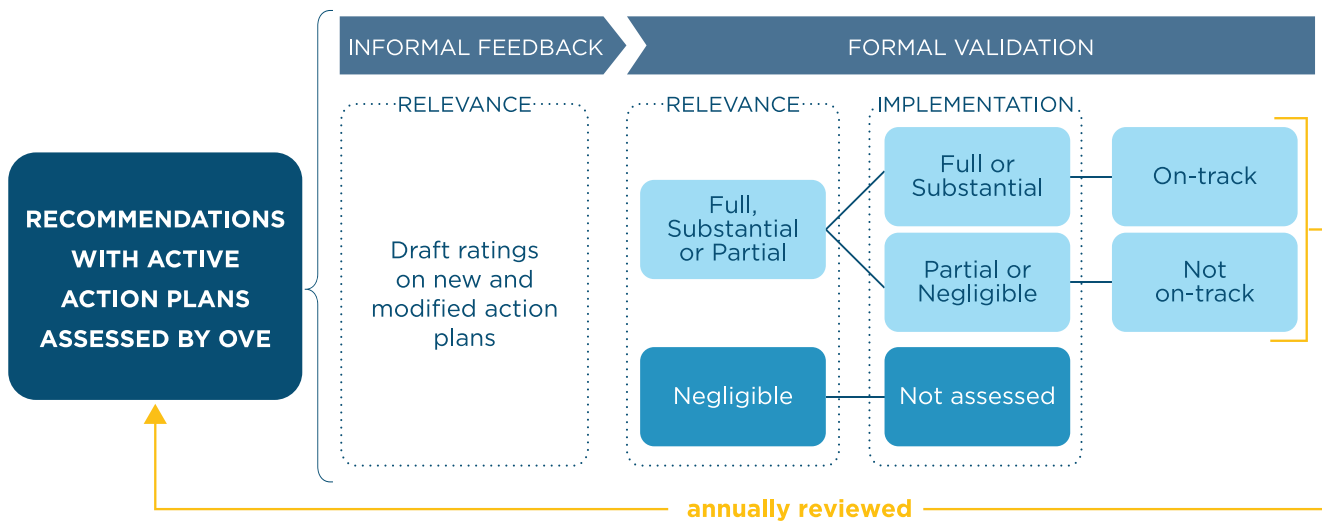
OVE determines the level of adoption of each recommendation with an action plan that has reached its Management-set completion date or has been under the ReTS monitoring for four years. This rating combines the individual ratings for relevance and cumulative degree of annual implementation of action plans. (Figs. 3 and 4)

6

Recommendations are retired

Following the validation cycle, recommendations are retired from the ReTS either as adopted (those with a rating of *full* or *substantial adoption*) or as not adopted (those with a rating of *partial* or *negligible adoption*). (Fig. 3 and 4)

**Figure 1. Tracking of OVE’s recommendations.
Annual validation cycle of action plans**



Note: Evaluability is assessed when analyzing relevance. If the action plan has negligible relevance, it is not validated with respect to implementation.

Figure 2. OVE's criteria (Evaluability)

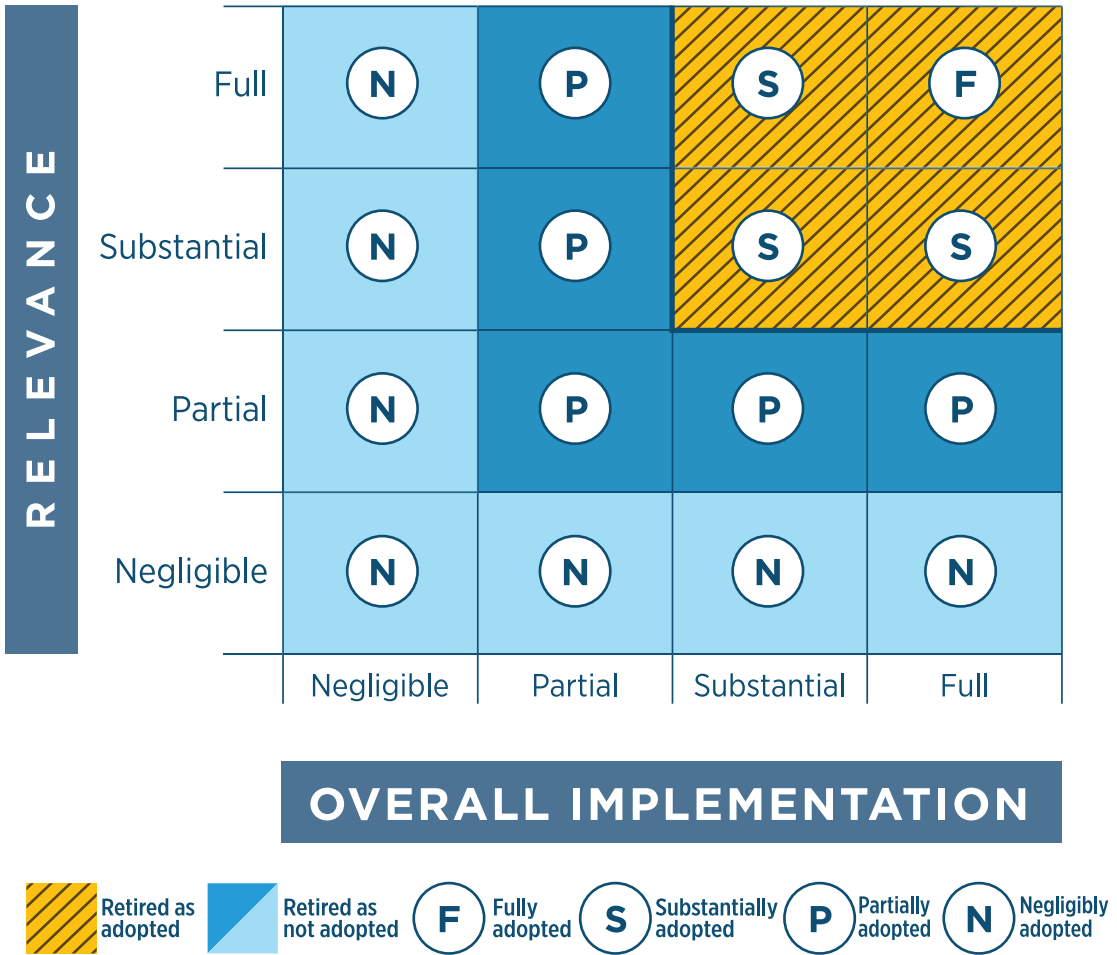
What is examined?	Criteria
Does the action plan include well-defined actions?	Yes / Partially / No
Does the action plan include output targets for all actions?	
Are output targets measurable?	
Does the action plan include deadlines for completion (with intermediate milestones?)	

Figure 3. OVE's criteria and four-point rating scale (Relevance, Implementation and Adoption)

Criteria	What is examined?	Negligible	Partial	Substantial	Full
Relevance of Action Plan	Extent to which an action plan addresses the recommendation	Action plan fails to address the recommendation	Action plan has considerable shortcomings in addressing the recommendation	Action plan addresses the recommendation with minor shortcomings	Action plan addresses the recommendation completely
Degree of Implementation of Action Plan	Extent to which actions due or expect to make progress in the examined year were implemented as planned	Virtually no actions were completed as planned	Few actions were completed as planned	Most actions were completed as planned	All actions were completed as planned
Level of Adoption of recommendations	Extent to which the IDB Group has adopted the recommendation	Either relevance OR level of implementation were negligible	Action plan was at least partially relevant AND at least partially implemented	Action plan was at least substantially relevant AND at least substantially implemented	Action plan was fully relevant and fully implemented

Note: For adoption, it uses the degree of relevance and the overall implementation in all years in which the action plan was active.

Figure 4. Degree of adoption of recommendations



Office of Evaluation and Oversight - OVE

Established in 1999 as an independent evaluation office, OVE evaluates the performance and development effectiveness of the activities of the Inter-American Development Bank Group (IDB Group). These evaluations seek to strengthen the IDB Group through learning, accountability and transparency.

OVE evaluations are disclosed to the public in accordance with IDB Group policies to share lessons learned with the region and the development community at large.

ove Office of
Evaluation
and Oversight

 www.iadb.org/ove

 [@BID_evaluacion](https://twitter.com/BID_evaluacion)

 [linkedin.com/showcase/idb-ove](https://www.linkedin.com/showcase/idb-ove)

Download OVE ReTS Report

