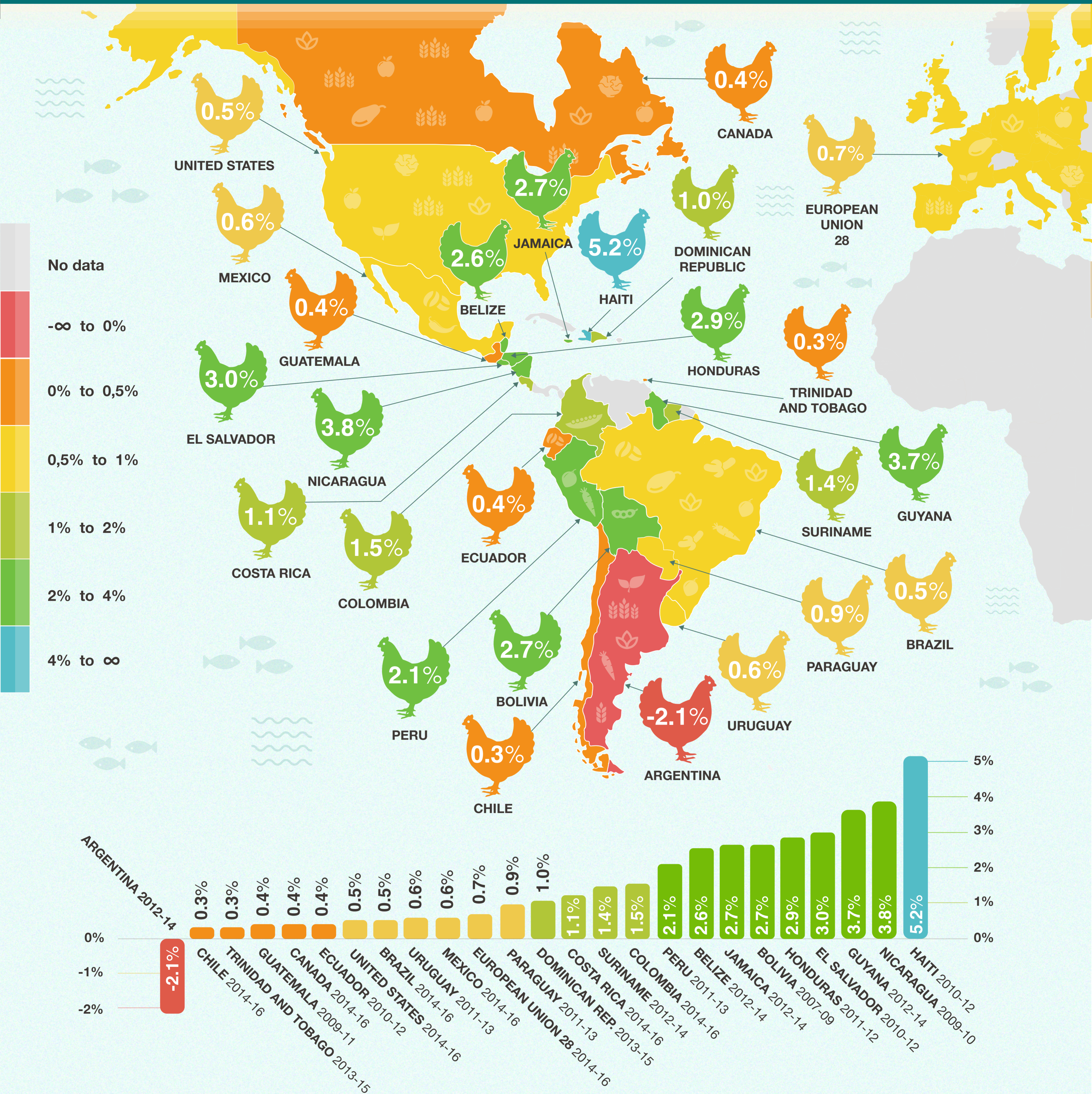


# Support to agricultural producers

## Total Support Estimate (%)

What percentage of the Gross Domestic Product (GDP) of Latin American and Caribbean countries does public support for the agricultural sector represent? On this map you can see the average of the last 3 years available.



For more information please visit

[www.iadb.org/agrimonitor](http://www.iadb.org/agrimonitor)

AGRIMONITOR is the IDB database that monitors agricultural policies in Latin America and the Caribbean and measures their level and composition.

